

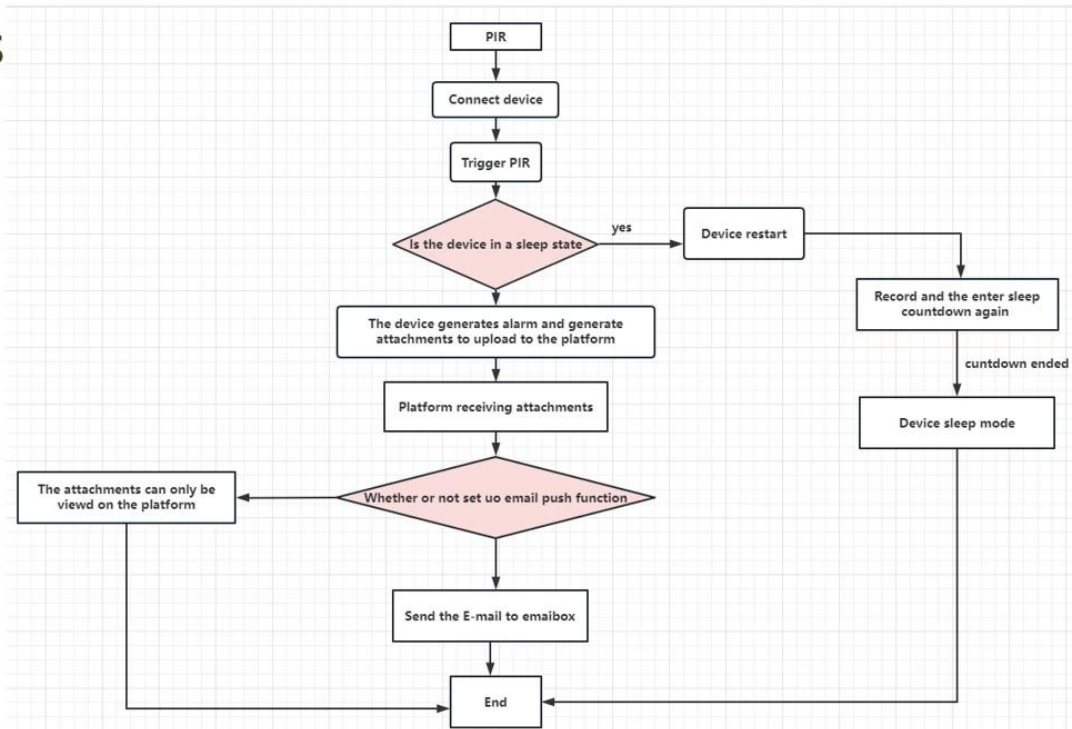




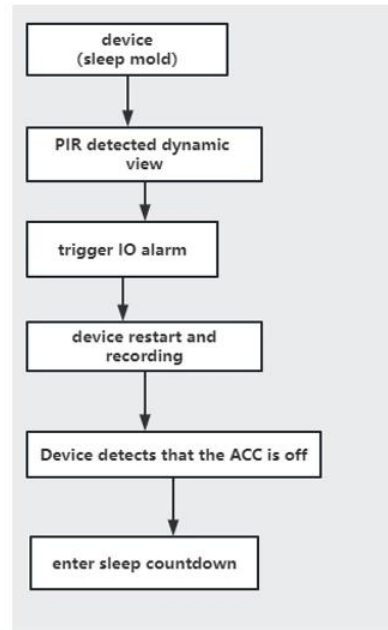
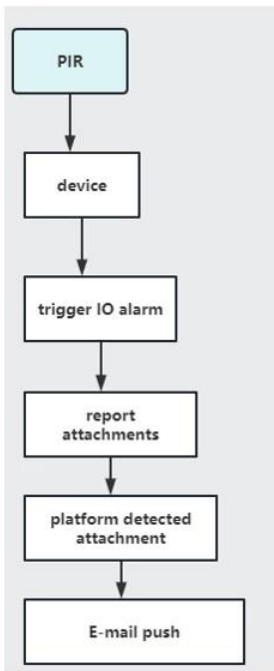
PIR is a device that recognizes screen changes. When PIR detects a screen change, it will generate a high level to the device to generate an IO alarm. When our device detects the IO signal, it will link with the platform to generate several functions□ Sleep wake-up, attachment upload, email push

Feature

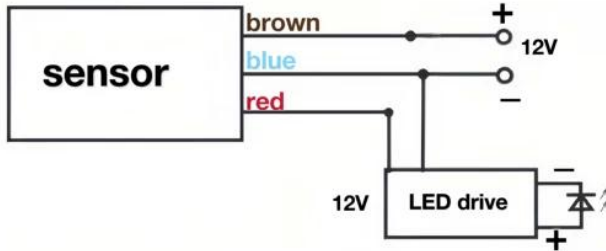
Features



PIR Function Flowchart



Sensor connection display



Brown: corresponding to the red 12V
Blue: Corresponding to the black ground wire
Red: corresponding to the green SENSOR -INX of the device
PS: PIR needs external power connection

PIR setting



SENS: Set the sensitivity of PIR, the range is 2M-14M
TIME: Set the alarm duration of PIR, the range is 9~15 seconds
LUX: Set the working time of PIR, the sun represents the whole day, the moon represents the night