

4CH FULL D1 AHD vehicle mobile DVR 4ch HDD/Sd card MDVR with 3G/WIFI/GPS,RCM-MDVR7104series



[HD Vehicle DVR on sales](#)

Item	Parameter
OS	Linux
Language	English/Chinese/Customized
Video Compression	H.264 Compression
OSD	Overlays information such as date time and vehicle ID
GUI	Graphical User Interface Setup system parameters with the remote control.

Video Record System	Video Input	4CH 720P AHD input/SD input/ mixed input,aviation connector, 1.0Vp-p, 75Ω
	Video Output	2CH CVBS+ VGA output for optional, 1.0Vp-p, 75Ω,Aviation,Support 1CH Full Screen, 4CH Screen view
	Preview	Support 1 channel and 4 channels preview., Support Manual/Alarm Trigger full screen preview
	Resolution	720P/D1/HD1/CIF, MAX:4 channels 720P and 4 channels D1
	Image Quality	0-7 levels, 0 is the highest level.
	Video Standard	PAL: 100f/s , CCIR625 line,50field; NTSC: 120f/s, CCIR525 line,60field; CIF: 256Kbps ~ 1.5Mbps, 8 level video quality optional; HD1: 600Kbps ~ 2.5Mbps, 8 level video quality optional; D1: 800Kbps ~ 3Mbps, 8 level video quality optional; 720P: 4Mbps-6Mbps, multi level video quality optional
	Record Mode	The default setting is auto recording after power on. Timed recording, alarm trigger recording and manual recording are supported.
Audio	Audio Input	4CH Aviation Plug Input
	Audio Output	2CH,headphone connect at front panel, BNC Connect on Back panel
	Compression	G.726 compression, 8KB/s speed
Alarm Input	7CH Alarm Input,1CH AD Input, impulse speed input,Alarm Linkage	
Alarm Output	2CH Alarm Output,Support Light/ Sound alarm sensor,Oil/Power cut off	
Interface	3CH RS232, POS/Fuel Sensor/ LED Advertisement Connection	
	2CH 485 Interface,Connect PTZ Camera	
	2CH CAN interface	
Wireless Transmission	Support Built in 3G transmission, WCDMA, CDMA2000,GPRS, EDGE Built in 4G module optional, TDD-LTE, FDD-LTE	
GPS Position	Support Built GPS/BD Module	
	HDD	Max 2.5" 2TB HDD
Storage	SD Card	Max 128GB SD Card Mirror Recording Keep Data Safety
	Update	Support USB Updating, SD Card Updatin, OTA Remote Updating
	File Format	H.264
	File System	Special FAT32 File System
	USB	USB Interface on Front Panel for data back up by U Disk,Hard Disk
Record Replay	Video Search	Search By Record Time/Record Type etc
	Playback	Max support 4CH Replay /Stop/Fast/Slow at same time Support forward and backward play at the speed of: x 2,x4,x8,x16.
Security	User/Admin 2 Level Different Password	

Optional Functions	Voice Call	Support voice call each other
	Serial Expand	Support LED Advertisement Panel□Oil Sensor□ POS□Bus Station Broadcaster□ Car OBD,ect.external device
Voltage & Power	Power Management	Wide Voltage.Support Timed/Delay off
	Input Voltage	DC:+6V - +36V
	Power	Working □5W
	Temperature	-20°C - +70°C
Working Environment	Humidity	20% - 80%
	Size	200 □D□* 187□W□* 62□H□ mm
Others	Weight	1.90 Kg

Main Features

1. HIS Solution,H.264 Compression,support 4CH 720P AHD input/ 4CH analog standard definition Camera input/2CH HD + 2CH SD mixed input;
2. 3CH video output (2CH CVBS video, support front&rear panel output; VGA output for optional.)
3. Exclusive pre-allocate File System protect data completeness, prevent SD Card fragment,ensure data stably and completely.
4. 8-36V wide voltage with low power consumption.
5. Unique UPS Technology ensures the integrality of record when power failure occurs,even can for 8-10s.
6. HDD+SD Card Storage (Support 2.5" HDD, max 128G SD Card) protect from Shock & Dust damage ;support USB port data backup and device update;
7. Support 2 USB interfaces, data backup and device upgrade.
8. Support 9CH alarm input (1CH analog input + 8CH IO alarm input), 2CH independent alarm output.
9. Support 2 CAN interfaces.
10. Support HDD heating functions,can work in harsh environment.
11. Support GPS/BD/G-Sensor Extension modul;
12. Realize real-time monitor through 3G/4G;
13. Support WIFI module, can download data automatically.
- 14 Support Broadcast/Intercom/Text sent etc;can add oil sensor/temperature sensor/POS/LED Advertisement Panel;
15. Support SMS remote configure/ control device;

16. OTA(On-The-Air) Device automatically upgrade function, can upgrade to updated version , maintenance is more convenient.

17. Support voice call function.

18. Support IOS/Android Phone Remote monitor

PC Software interface for gps tracking

The screenshot displays the 'Mobile monitoring and management platform' software interface. The main window is divided into several sections:

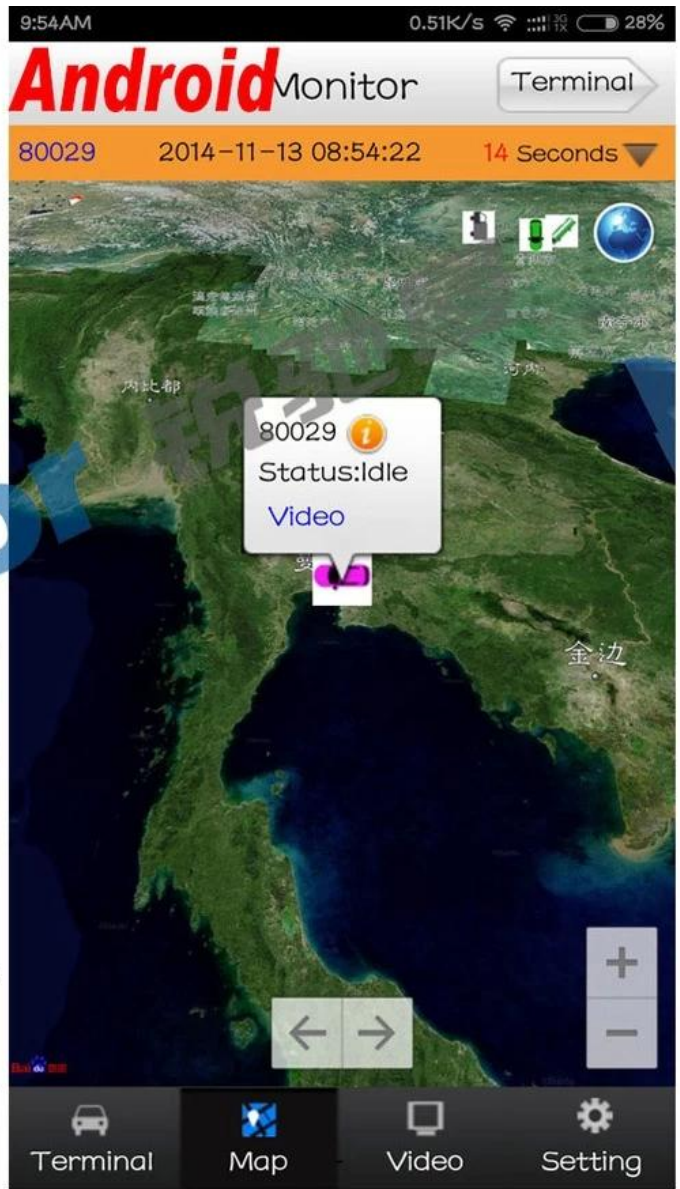
- Top Bar:** Contains navigation icons for Video, Map, Playback, System Set, Log Query, and Extend App.
- Left Panel:** A 'Dev List' (Device List) showing a tree view of monitored devices under 'Monitor Center(5/12)'. Below it, a table lists device details for 'Device C 26562'.
- Center Area:** Four video camera feeds labeled '1' through '4', showing different interior views of a vehicle. Below the feeds is a control bar with playback and zoom icons.
- Right Panel:** A map showing the vehicle's location on a road network. A pop-up window provides details for device 'C87762'.
- Bottom Panel:** A status bar with a 'Monitoring' indicator, system event logs, and overall system statistics.

Status	PTZ	Color	VOIP
Device type		MDVR	
Vehicle Name		贵 C 26562	
Vehicle ID		80088	
Company		遵义县万发出租运输有限公司	
Their Group		Monitor Center	
Status		Online	
Positioning Time		2015-08-11 10:10:22	
Location		贵州省遵义市红花岗区春天	
Speed		13.70 km/h(South)	
Costs		Normal	

Device	Positioning Time	Position	Speed	Alarm	Sta
贵C87762	2015-08-11 10:10:19	福建省漳州市龙文区G76(厦蓉高速公路)	0.00 km/h(Northwest)		(On)

Running: 00:02:02 Online:5 / Number of set loss:5 / Arrears:0 / Total:12 Line Rate:41.67% / Lost Rate:41.67%

Android/IOS APP Monitor



Server software interface

Vehicle Management System Welcome! 销售客户 | Manager | Exit

Report Device User

Mileage Summary

Begin Time: 2016-01-08 00:00:00 To: 2016-01-08 16:27:09

Device: All Devices Select Device Query Export To Excel Export To Csv Export To Pdf

Index	Vehicle	Total Mileage (KM)	Begin Time	Start Mileage (KM)	Start Position	End Time	End Mileage (KM)
1	粤EX3114	174.88	2016-01-08 09:03:32	22.95	22.534264, 114.006444	2016-01-08 16:25:41	157.83
2	粤EX3130	202.07	2016-01-08 07:33:17	18.1	22.884299, 112.892602	2016-01-08 16:25:28	171.57
3	24012	277.42	2016-01-08 07:09:55	23.41	23.369562, 116.675227	2016-01-08 14:57:24	300.83
4	冀A76248	97.4	2016-01-08 00:00:25	299.97	41.572469, 118.786245	2016-01-08 09:42:39	41.09
5	24023	0	2016-01-08 00:00:07	16.26	37.758759, 120.731127	2016-01-08 16:19:07	16.26
6	鲁QW5387	416.36	2016-01-08 06:09:54	96.66	35.461432, 117.643793	2016-01-08 16:20:11	92.83
7	鲁J81712	120.98	2016-01-08 04:48:40	26.51	35.876478, 117.681941	2016-01-08 14:25:07	144.92
8	粤H65250	45.81	2016-01-08 00:00:03	139.13	22.654394, 112.498593	2016-01-08 16:15:15	115.82
9	粤H65153	40.61	2016-01-08 00:00:27	92	22.854197, 112.497665	2016-01-08 16:11:28	73.72
10	粤H65368	111.72	2016-01-08 00:00:15	145.61	22.654321, 112.498645	2016-01-08 16:24:48	93.9
11	粤H65010	52.02	2016-01-08 00:00:10	93.24	22.854234, 112.497795	2016-01-08 16:15:55	57.92
12	鲁AA3683	855.08	2016-01-08 00:00:29	354.36	35.950843, 117.659700	2016-01-08 16:24:44	1009.74
13	24058	224.42	2016-01-08 07:00:58	44.57	37.949788, 118.844070	2016-01-08 16:17:34	60.4
14	28999	2.36	2016-01-08 13:13:09	17.6	28.734420, 121.235847	2016-01-08 13:57:27	19.81
15	01568	369.29	2016-01-08 00:00:54	51.04	33.733305, 115.868921	2016-01-08 16:03:58	420.33

Application



Good Relationship with our Customers



Contact : Amily
Email: overseasales-2@rcmcctv.com
Skype: rcmcctvsales2
QQ: 2355778097
MB: +86 18929314790